

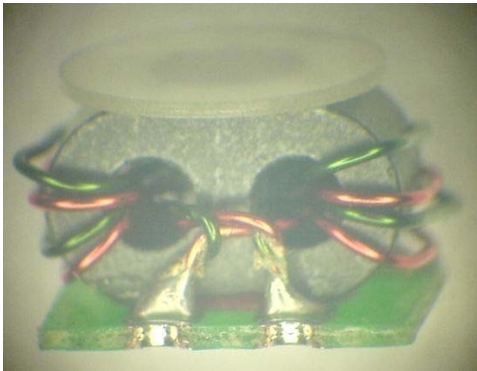
Transformer with Tap **M/A-COM Products**
0.05 to 1.0 GHz

Features

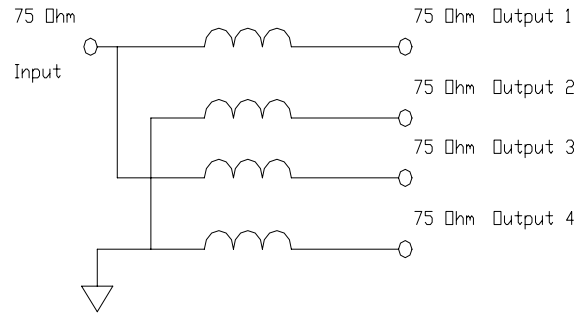
- Surface Mount.
- 1:4 impedance.
- Available on Tape and Reel.

Description

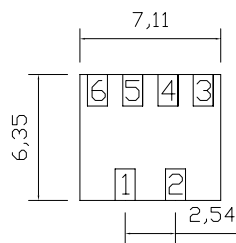
M/A Com's MABA-008980-CF0440 is a 4:1 transmission line, coupled step-up transformer in a low cost, surface mount package. Ideally suited for high volume applications.



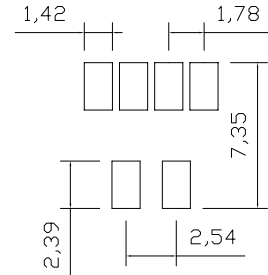
Schematic



Case Style : SM-168A



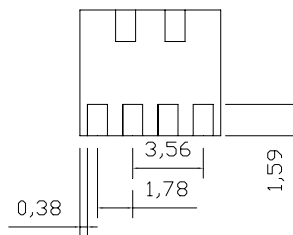
Top View



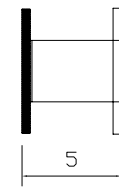
Footprint for PCB design

Pin Configuration

Function	Pin No.
Input	1
Ground	2
Output 1	6
Output 2	5
Output 3	4
Output 4	3



Bottom View



Side View

* Dimensions are millimeters ±0.38 unless otherwise specified.

M/A-COM Inc. and its affiliates reserve the right to make changes to the product(s) or information contained herein without notice. M/A-COM makes no warranty, representation or guarantee regarding the suitability of its products for any particular purpose, nor does M/A-COM assume any liability whatsoever arising out of the use or application of any product(s) or information.

- **North America** Tel: 800.366.2266 / Fax: 978.366.2266
- **Europe** Tel: 44.1908.574.200 / Fax: 44.1908.574.300
- **Asia/Pacific** Tel: 81.44.844.8296 / Fax: 81.44.844.8298

Visit www.macom.com for additional data sheets and product information.

ADVANCED: Data Sheets contain information regarding a product M/A-COM is considering for development. Performance is based on target specifications, simulated results, and/or prototype measurements. Commitment to develop is not guaranteed.
PRELIMINARY: Data Sheets contain information regarding a product M/A-COM has under development. Performance is based on engineering tests. Specifications are typical. Mechanical outline has been fixed. Engineering samples and/or test data may be available. Commitment to produce in volume is not guaranteed.
RELEASED: In full production, samples readily available, standard lead times apply.

Transformer with Tap
0.05 to 1.0 GHz

M/A-COM Products

Electrical Specifications: @25°C, 0dBm, 75 Ohms

Parameter	Test Conditions	Units	MAX	Typ.	Min
Insertion Loss 1 & 3	5 – 50 MHz	dB	-6.0	-5.0	-4.5
	50 – 550 MHz	dB	-7.0	-6.0	-5.0
	550 – 870 MHz	dB	-8.5	-7.0	-6.0
	870 – 1000 MHz	dB	-9.0	-7.8	-6.0
Insertion Loss 2 & 4	5 – 50 MHz	dB	-9.5	-9.0	-6.0
	50 – 550 MHz	dB	-8.0	-7.3	-6.0
	550 – 1000 MHz	dB	-8.5	-7.3	-6.0
Amp Balance	5 – 50 MHz	dB	± 5.0	- 4.0	-
	50 – 870 MHz	dB	± 3.0	-1.8	-
	870 – 1000 MHz	dB	± 1.5	-0.5	-
Phase Balance	5 – 50 MHz	Degrees	± 35	30	-
	50 – 300 MHz	Degrees	± 10	2	-
	300 – 700 MHz	Degrees	± 20	10	-
	700 – 1000 MHz	Degrees	± 25	15	-

Absolute Maximum Ratings

Parameter	Absolute Maximum
RF Power	50 mW
Peak IF Current	40 mA
Storage Temperature	-40°C to +85° C
Operating Temperature	-40°C to +85° C
Pin Temperature (10 Seconds)	260° C

Ordering Information

Part Number	Package
MABA-008980-CF0290	900 piece reel

1. Exceeding any one or combination of these limits may cause permanent damage to this device.
2. M/A-COM does not recommend sustained operation near these survivability limits.

2

M/A-COM Inc. and its affiliates reserve the right to make changes to the product(s) or information contained herein without notice. M/A-COM makes no warranty, representation or guarantee regarding the suitability of its products for any particular purpose, nor does M/A-COM assume any liability whatsoever arising out of the use or application of any product(s) or information.

• **North America** Tel: 800.366.2266 / Fax: 978.366.2266
 • **Europe** Tel: 44.1908.574.200 / Fax: 44.1908.574.300
 • **Asia/Pacific** Tel: 81.44.844.8296 / Fax: 81.44.844.8298
 Visit www.macom.com for additional data sheets and product information.

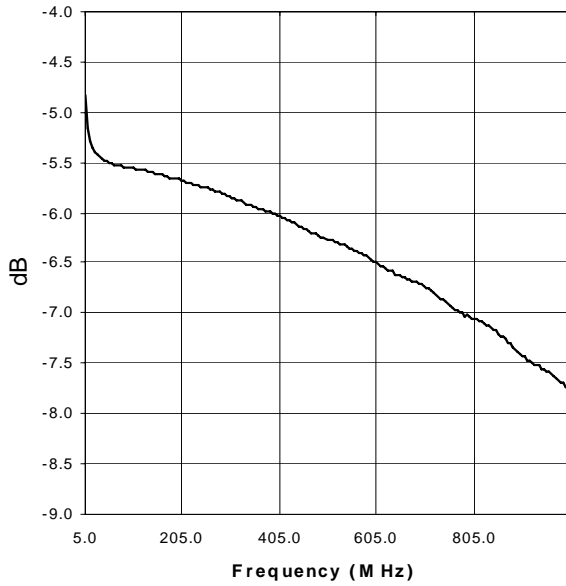
ADVANCED: Data Sheets contain information regarding a product M/A-COM is considering for development. Performance is based on target specifications, simulated results, and/or prototype measurements. Commitment to develop is not guaranteed.

PRELIMINARY: Data Sheets contain information regarding a product M/A-COM has under development. Performance is based on engineering tests. Specifications are typical. Mechanical outline has been fixed. Engineering samples and/or test data may be available. Commitment to produce in volume is not guaranteed.

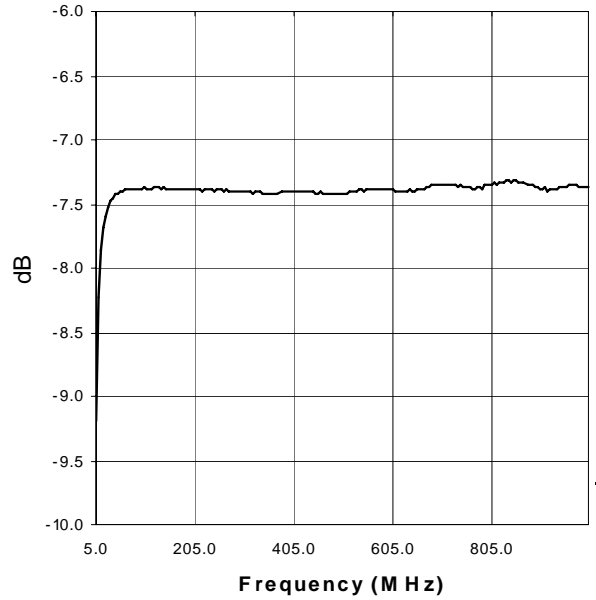
RELEASED: In full production, samples readily available, standard lead times apply.

Transformer with Tap **M/A-COM Products**
 0.05 to 1.0 GHz

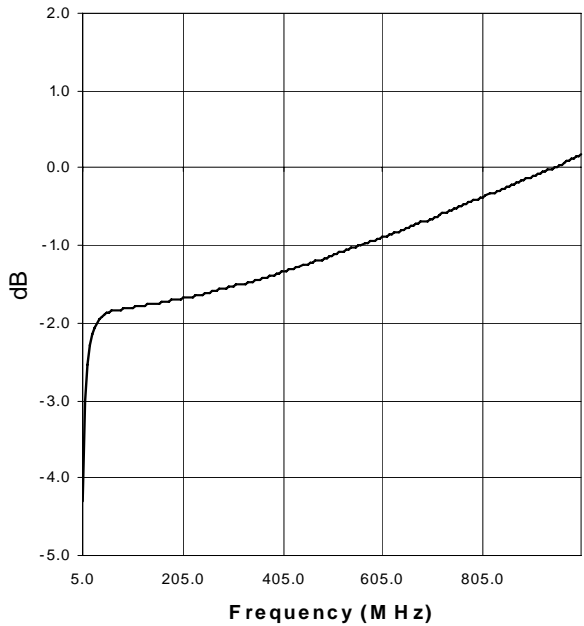
Insertion Loss 1&3



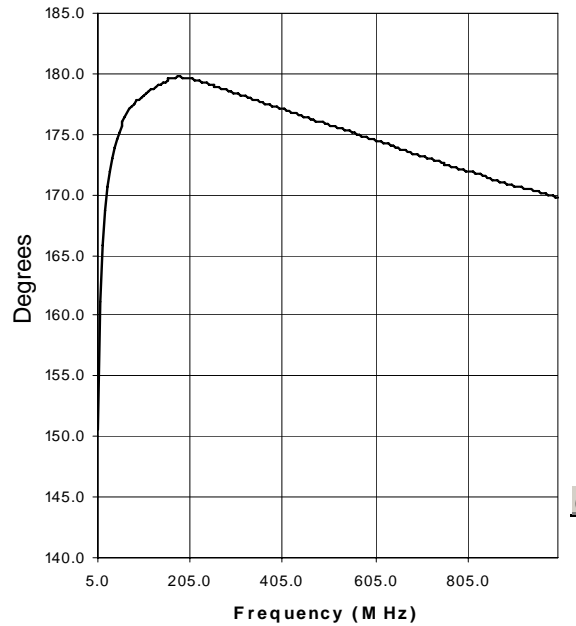
Insertion Loss 2&4



Amplitude Unbalance



Phase Unbalance



M/A-COM Inc. and its affiliates reserve the right to make changes to the product(s) or information contained herein without notice. M/A-COM makes no warranty, representation or guarantee regarding the suitability of its products for any particular purpose, nor does M/A-COM assume any liability whatsoever arising out of the use or application of any product(s) or information.

- **North America** Tel: 800.366.2266 / Fax: 978.366.2266
 - **Europe** Tel: 44.1908.574.200 / Fax: 44.1908.574.300
 - **Asia/Pacific** Tel: 81.44.844.8296 / Fax: 81.44.844.8298
- Visit www.macom.com for additional data sheets and product information.

ADVANCED: Data Sheets contain information regarding a product M/A-COM is considering for development. Performance is based on target specifications, simulated results, and/or prototype measurements. Commitment to develop is not guaranteed.

PRELIMINARY: Data Sheets contain information regarding a product M/A-COM has under development. Performance is based on engineering tests. Specifications are typical. Mechanical outline has been fixed. Engineering samples and/or test data may be available. Commitment to produce in volume is not guaranteed.

RELEASED: In full production, samples readily available, standard lead times apply.